

# SHERWOOD

ONE BED | PRIVATE BATH

Plan: Standard Reversed

Size: 297 sq ft

Type: Skilled nursing

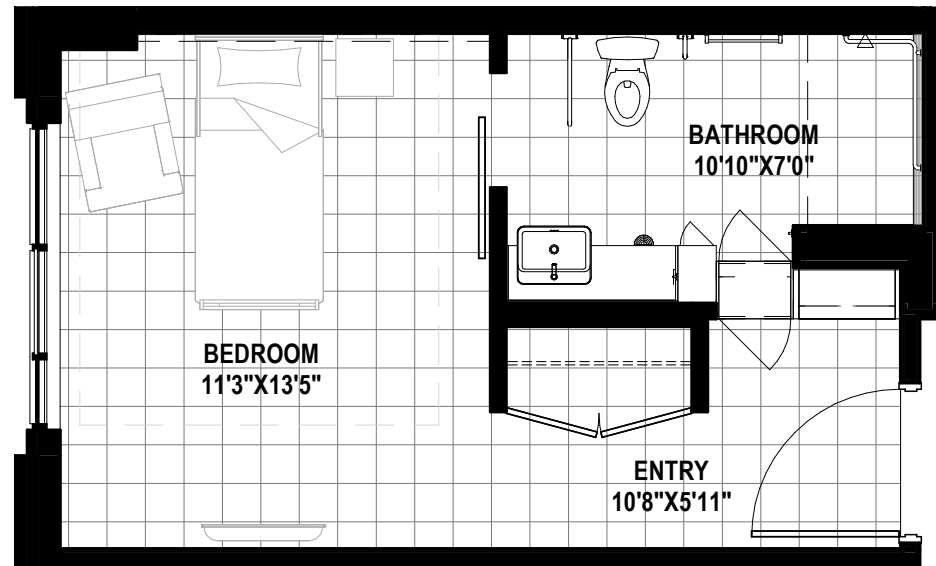
Neighborhood: Park, Selwyn,  
Carmel, Colony



embrace

HEALTH

AT SOUTHMINSTER



*Architectural square footage estimates are approximate. Floor plans are not to scale.*

704.551.6800 | [Southminster.org](http://Southminster.org)